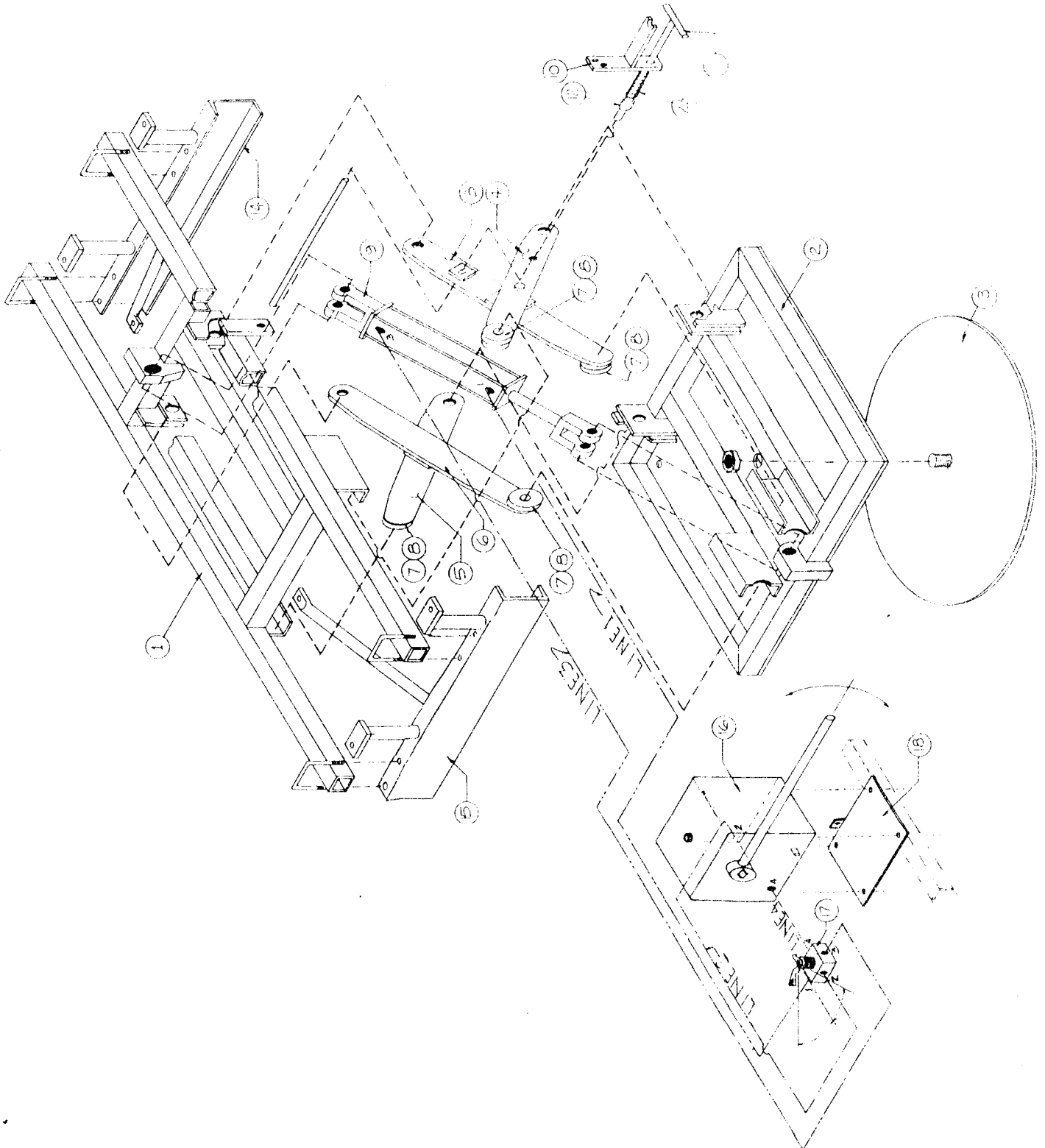




# WOODINGS - RAILCAR LIMITED

Hydraulic Turntable No. 1





# WOODINGS - RAILCAR LIMITED

Hydraulic Turntable (Option) 0120-A000

CBI - CBL '86

| Item No. | Part No.  | Part Name                         | Item No. | Part No. | Part Name |
|----------|-----------|-----------------------------------|----------|----------|-----------|
| 1        | 0120-S001 | Top Frame Sub Assy                |          |          |           |
| 2        | 0120-S002 | Bottom Frame Sub Assy             |          |          |           |
| 3        | 0120-S003 | Scissor Flat Assy A               |          |          |           |
| 4        | 0120-S004 | Scissor Flat Assy B               |          |          |           |
| 5        | 0120-S005 | Scissor Flat Assy C               |          |          |           |
| 6        | 0120-S006 | Scissor Flat Assy D               |          |          |           |
| 7        | 0120-P008 | Roller                            |          |          |           |
| 8        | 0120-P009 | Washer                            |          |          |           |
| 9        | 0120-P010 | Hydraulic Cylinder<br>2-1/8" x 8" |          |          |           |
| 10       | 0120-S011 | Safety Bracket Rear               |          |          |           |
| 11       | 0120-P012 | Safety Handle                     |          |          |           |
| 12       | 0120-P013 | Sleeve                            |          |          |           |
| 13       | 0120-S014 | Swivel Plate                      |          |          |           |
| 14       | 0120-S015 | Rail Skid Assy RH                 |          |          |           |
| 15       | 0120-S016 | Rail Skid Assy LH                 |          |          |           |
| 16       | 0120-P017 | Hydraulic Hand Pump<br>3.4 litre  |          |          |           |
| 17       | 0120-P018 | 4-Way Tandem Center<br>Valve      |          |          |           |
| 18       | 0120-P019 | Pump Support Plate                |          |          |           |
| 19       | 0120-S020 | Hydraulic Line 1 Sub Assy         |          |          |           |
| 20       | 0120-S021 | Hydraulic Line 2 Sub Assy         |          |          |           |
| 21       | 0120-S022 | Hydraulic Line 3 Sub Assy         |          |          |           |
| 22       | 0120-S023 | Hydraulic Line 4 Sub Assy         |          |          |           |
| 23       | 0120-P024 | Spring                            |          |          |           |